

**Motorsports-Exchange.com llc**  
*Bayside, Wisconsin USA*

# **XM- DVR Pro eXtreme Mobility Series**

## **Broadcast quality Solid State MPEG2 Digital Video Recorder**

### **for harsh environments**

### **XM-DVR PRO USB Drivers & DVR Explorer Application**

- Introduction ..... 2
- Driver Installation..... 2
- Transferring Recordings to your PC ..... 3
- Viewing Recordings on your PC ..... 5

## XM-DVR PRO EXTREME MOBILITY VIDEO RECORDER

### Introduction

**XM-DVR Pro** is a Dual Channel PAL, SECAM and NTSC digital video recorder (DVR) featuring unprecedented full D1 @ 10 MBPS. This DVR uses an embedded real-time operating system and is built on a "hardened" DVR module platform. All of these technologies combined in a mobile package in order to provide broadcasting (POV, Reality TV), security and surveillance, military and mobile markets with an advanced yet rock-solid, stable and reliable solution.

**XM-DVR Pro** is capable of recording for days or hours (based on the target media) to a hard disk drive (HDD), **solid state Compact Flash (CF) memory cards**, or a DVD drive. **XM-DVR Pro** can be used as a stand-alone mobile recording unit or a "*black box recorder*" and is among the smallest *hardened mobile* ultra-high resolution and video quality digital recording systems on the market today.

**XM-DVR Pro** is equipped to handle "full D1" NTSC, PAL or SECAM recording from (2) concurrent AV streams to enable applications requiring more than one high quality camera recordings.

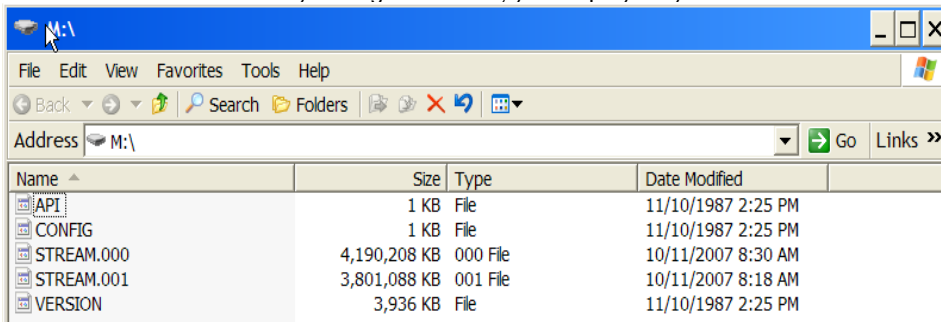
In order to review previously recorded content, you may either copy recordings to a PC or view them directly via AV Out. To perform the former, you must first install USB Drivers/DVR USB Application and restart your computer. This needs to take place only the first time you watch videos on a particular computer.

### Driver Installation

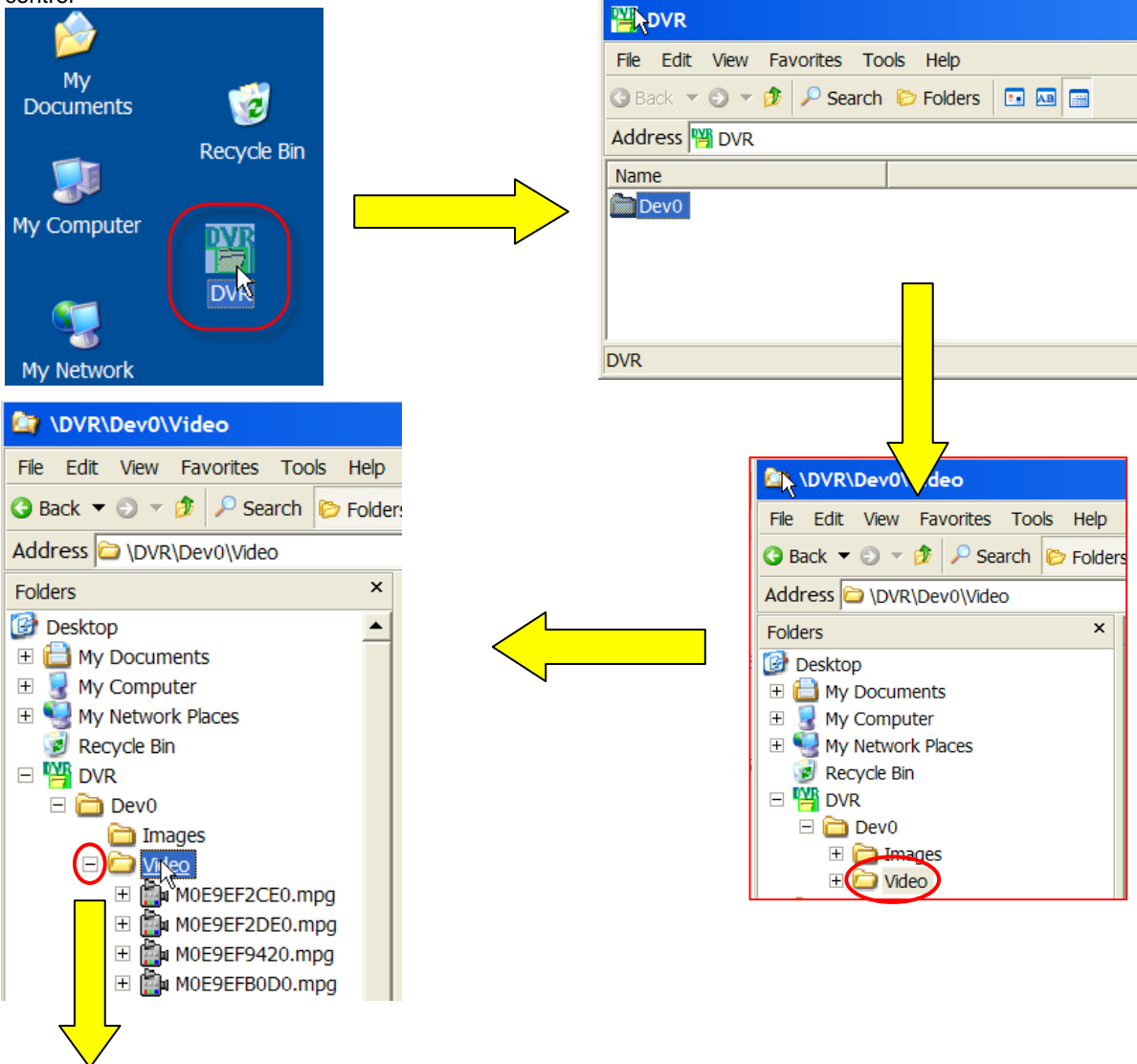
1. Insert the Installation CD which is included with your XM DVR Pro in your computer's CD ROM drive
2. Install the following application: **D:\XM-DVR\SETUP.EXE** (where D: is your CD ROM drive)
3. **Reboot** your computer (you **MUST** reboot. Really.)

## Transferring Recordings to your PC

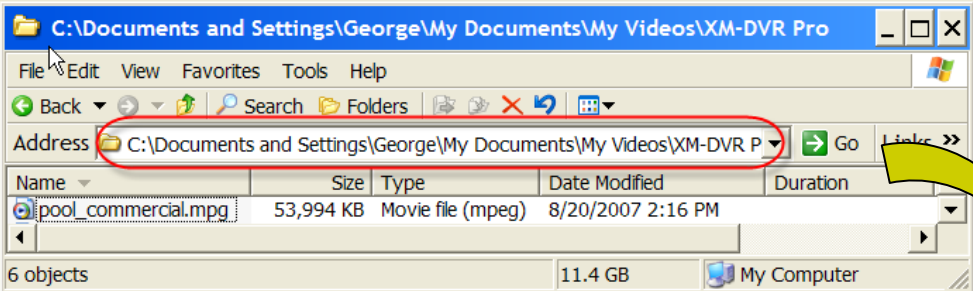
1. Insert first CF card into the CF Reader
2. Connect a USB Compact Flash Reader to your PC
3. Your computer may automatically display contents of the CF card on the screen. If this happens or should you browse the contents of the card directly through Windows, you display may look similar to the one below.



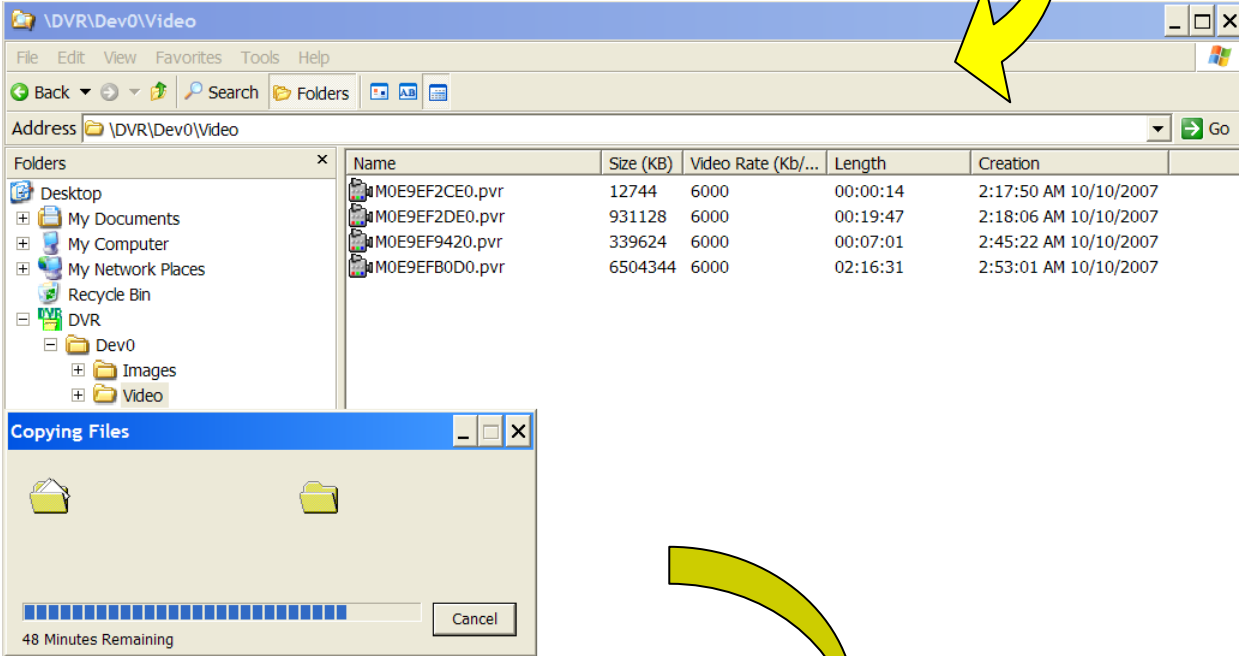
4. This is normal – the recordings are stored in a special fault-tolerant PVR format and need to be transferred via included PC-based USB software. If you did not install this software, please disconnect the CF Reader and proceed with the software installation (see Driver Installation).
5. Run **DVR Application** located on your **Desktop**. Double-click on **Dev0** (First CF Card), then Expand the **Video** tree control



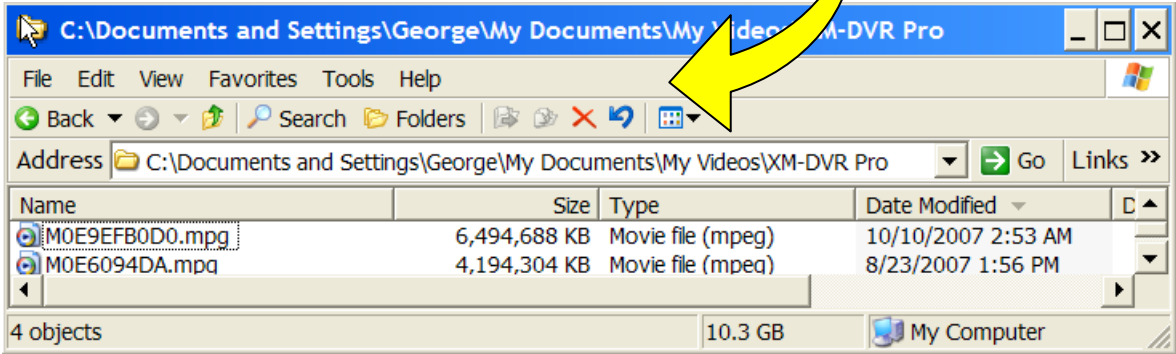
6. Open the destination folder where XM-DVR Pro recordings will reside on your computer



7. Drag your recording from \DVR\Dev0\Video and drop it onto the folder selected in Step 8.

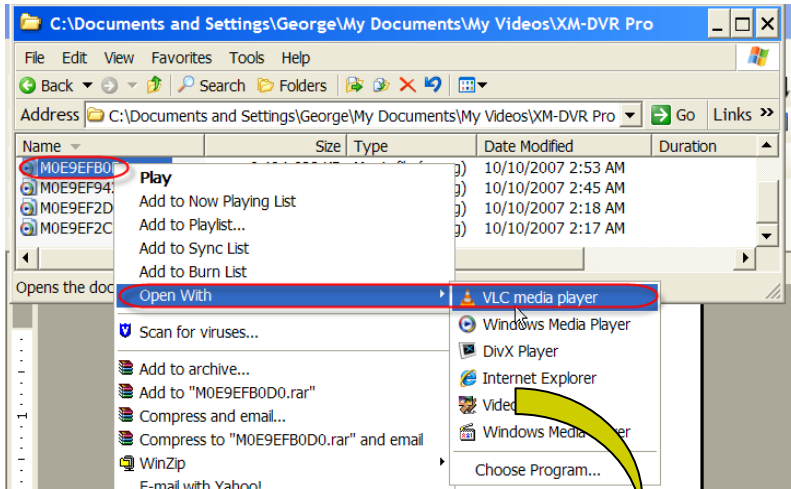


8. After the file is transferred, your target folder will look similar to the one below.

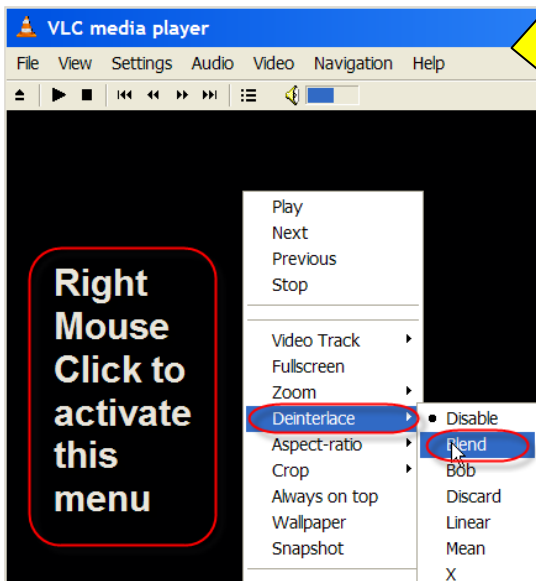


### Viewing Recordings on your PC

1. Open the directory containing recording files
2. Right-Mouse-Click on the recording you wish to view
3. Select **Open With** → **VLC Media Player**



4. Enable “De-interlace” function



5. Enable “Playback in Full Screen” function – if you wish to view your video in “full screen” mode instead of a window.

