

Below is an excerpt from an email from our factory explaining how they test boards and complete cameras:

Please be advised the horizontal resolution can be depended on the test conditions.

Our test standard is as follows:

A. Test Equipments

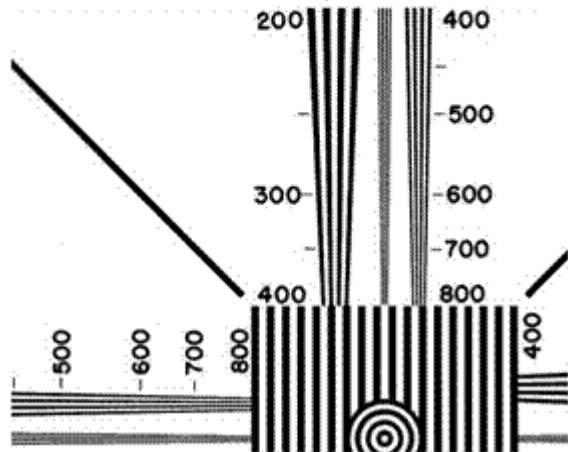
1. Monitor : PVM-14L5 or PVM-14M4E (Sony)
2. Standard Resolution Chart : EIAJ TEST CHART A
3. Back Light Panel: DNP Standard Viewer (3100°K) (Dai Nippon Printing Co., Ltd)
4. Lens: CS mount: YV2.7X2.9LA-2 (Fujinon) or Board Lens: 8mm

B. Test Methods

1. Use a specified power to operate the cameras. (12VDC, regulated)
2. Video-out (RCA or BNC) terminal should be connected to a Monitor directly or indirectly connected with extension cable and a proper connector.
3. A monitor should be on under scan mode
4. The Camera should be positioned on a tripod or a fixed bracket and placed as closely to display the full image of EIAJ Test chart as possible
5. The distance between the camera and the chart allow you to see a sharp image of the full test chart. And then adjust the lens to the accurate focus with the four circles of the edges of the chart.
6. You have to determine the point which the four sharp triangular lines converge into three lines.
7. That is the point where the resolution limits can be read off the chart. The limit of the point is the ability of a camera to resolve find detail, Resolution.

Triangular Lines

(See the point of the lines to be distinguished clearly)



Hope this helps!

PS as a Datatoys customer, you have access to the Datatoys on-line documentation web page:

<http://www.datatoys.com/docs.htm>