



Datatoys DVR2PC File Transfer Application User Guide

Introduction	2
Installation	2
From Website.....	2
From Software Disk.....	3
DVR2PC	4
Loading Media.....	4
DVR.....	4
Media Reader.....	5
Video Events.....	6
Disk.....	8
Select.....	8
Reload.....	8
Format.....	8
System.....	9
Partition.....	9
Settings.....	9
Firmware.....	10
Updates.....	10
Trouble Shooting	11
Contact	12

Introduction

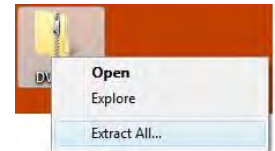
The DVR2PC file transfer application allows users to transfer, manage and update their video events. This guide is designed to compliment the DVR2PC file transfer customer assistance video which is available on the software disk that was included with the system and on the Datatoys website under support. The XM-DVR Pro and Enforcer DVR use a special file encryption that allows for larger files sizes, more efficient data writing, and ensuring a secure video record. In order to remove video events, users *must* use the DVR2PC file transfer application.

Installation

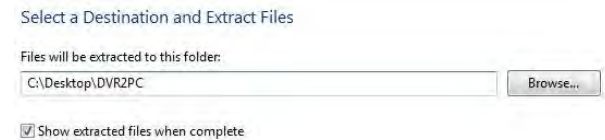
To begin, install the DVR2PC application. The DVR2PC program is available on the software disk that was included with the system and on the Datatoys website under support. <http://datatoys.com/support.php>

If downloading DVR2PC from the Datatoys website, right click the "DVR2PC File Transfer Application" and save it to the desktop.

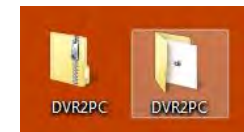
Once on the desktop right click DVR2PC and select "Extract All" or "Unzip".



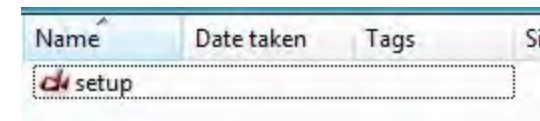
A window will appear. Select the desktop as the destination and click extract. This will extract the setup files to the desktop.



Open the unzipped DVR2PC Folder

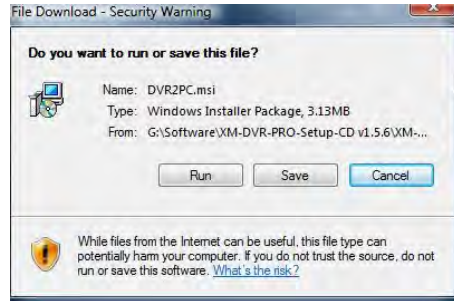


Double Click "Setup"

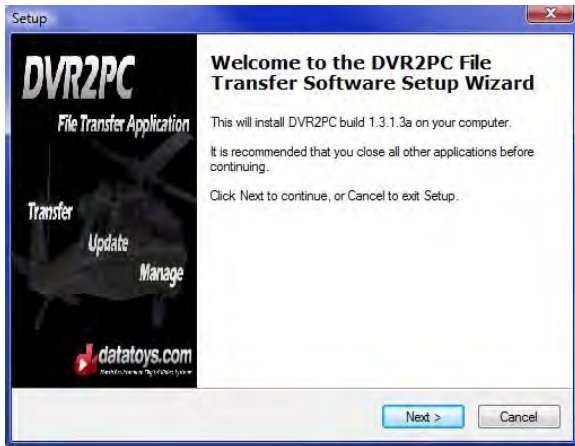


If installing directly from the disk simply click “DVR2PC Software”.

A window will appear. Click “Run”



The install wizard will appear. Simply follow the onscreen instructions to complete the installation process.



DVR2PC

Loading Media

Before opening the DVR2PC program, users *must* first load their media. This can be done through the DVR or a media reader.

DVR

Before opening the DVR2PC program, the DVR must be fully powered and attached to a PC via a USB2.0 cable. Before booting the DVR, insure the media is properly inserted and record triggers are in the off position. If the unit is set to record on power-up, the cameras must be disconnected before booting the unit. Once the unit is fully booted and the active light is blinking slowly, it is safe to connect the USB2.0 cable to the DVR and then to the PC.

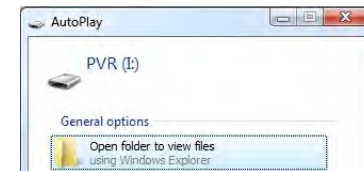
Media Reader (Card Reader)

Media may also be loaded with a media reader. There are no strict requirements on the media reader used. Media readers are available at any electronics store. It is recommended that a USB2.0 enabled reader be used as standard readers will result in longer download times. Before connecting the media reader to the PC, a CF card must be inserted into the appropriate slot. Then it is safe to connect the media reader to the PC.

NOTE: For optimal performance, it is recommended that the USB port located on the back of the PC be used.

Once the DVR is connected to the PC, an AutoPlay window may appear. *Close this window.*

Users may now open the DVR2PC program.



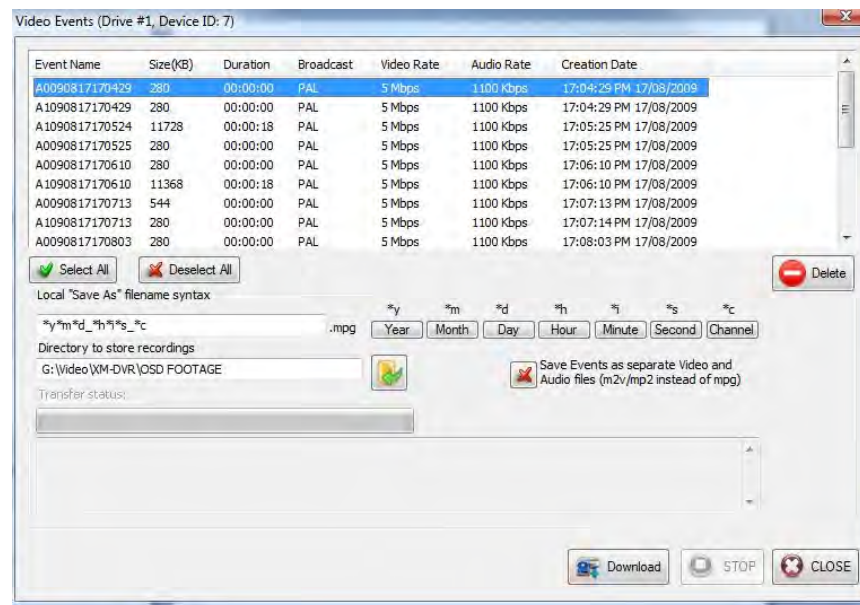
NOTE: DVR2PC will automatically eject media when the program is closed. Users *must* reload media prior to re-opening DVR2PC.

Once media is properly connected to the PC, users may now open the DVR2PC program. A quick start menu should appear. If it does not appear, click Disk>Quick Start Menu to load this menu.



Video Events

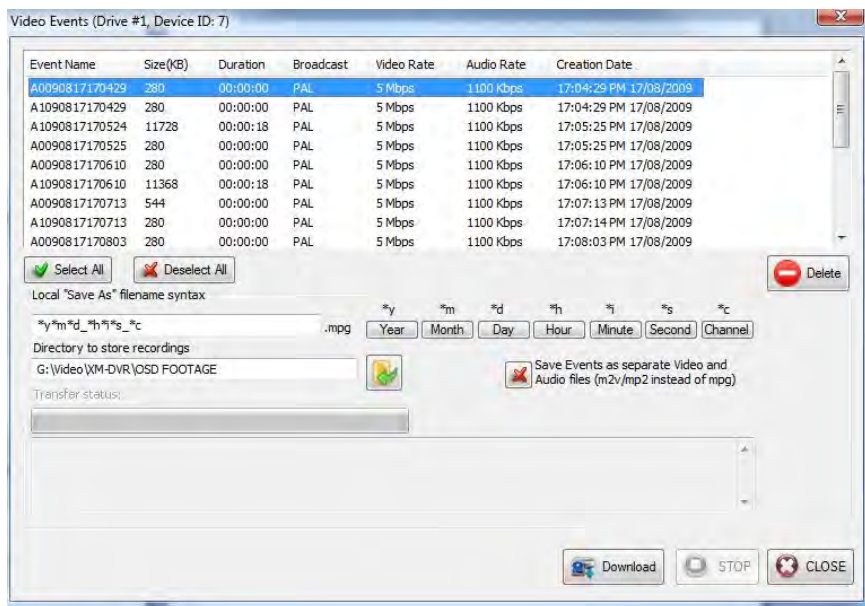
This section allows for the downloading and deletion of video events on the selected drive. There are two ways to enter this section; simply click “Events” on the Quick Start Menu, or click Disk>Video Events on the main menu.



Video events will be listed with the following attributes:

- Event Name – Derived from record type and date A0090817170429
 - A0 – Automatic Recording, Channel 1 “0”
 - 09 – Year – 2009
 - 08 – Month – August
 - 17 – Day – 17th
 - 17 – Hour – 5PM
 - 04 – Minute – :04 Min
 - 29 – Second - :29 Sec
- Size(KB) – Total event size
- Duration – Length of the event in HH:MM:SS
- Broadcast – NTSC or PAL Standard
- Video Rate – Video compression data rate
- Audio Rate – Audio compression data rate
- Creation Date – Date the event was initiated

Users may select single or multiple events for download or deletion. Select events individually, several adjacent events by using the shift key, or several nonadjacent events by holding control and clicking each specific event. Once events are selected, users may download by selecting a directory and click download. To delete events, click delete.



Users can select a file naming system by using the "Local "Save As" filename syntax" field. Events will be saved with a file name corresponding with the attributes selected. A choice of *y*m*d_*h*i*s_*c would yield a file name of 090812_133412_A0 for a recording started on August 12th, 2009 at 1:34 and 12 seconds PM for channel 1. Any text entered will automatically be inserted in the file name.

NOTE: If the file name syntax will not yield unique file names for multiple files only the last recording selected will be downloaded. (Example: There are four recordings on Sept. 18th and you have selected the syntax *y*m*d. If all four have the same year, month, and day, only the last one will save because the file names are not unique)

Disk

Select

This section allows users to switch between multiple drives connected to the PC, i.e. multiple CF cards, HDD's or SSD's. To switch drives simply select the drive desired, then click "OK".



Reload

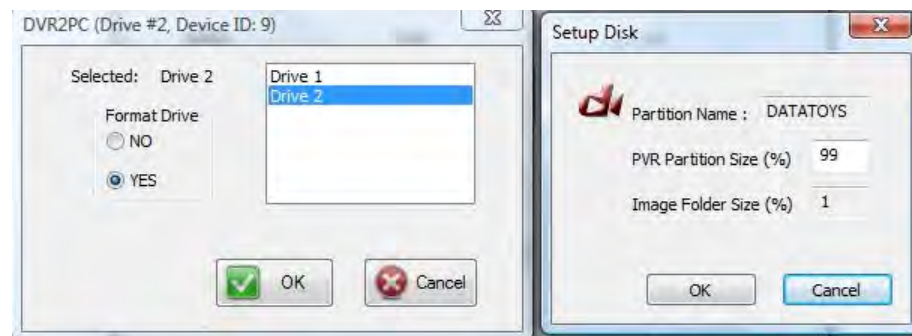
This option allows users to refresh the selected drive.

Format

NOTE: Formatting a drive will erase all video events and data on the drive.

CAUTION Do not remove or eject media while formatting, this may damage the drive.

This option allows users to format the selected media. To format, select the drive you wish to format, select YES, and click "OK". The Setup Disk window will then appear. Use the defaults and click OK. This will begin the format process.



System

Partition

CAUTION Do not load or delete files without specific instructions from Datatoys Technical Support as it may harm the drive and render the events useless.

Settings

This section allows users to change system settings. This function is only applicable when the DVR is connected directly to the PC.

NOTE Audio/Video setting changes made in this menu will only be applied for that specific boot. Once the unit is rebooted all Audio/Video settings applied in this section will reset.



- PC System Clock – Synchronizes the DVR clock with your PC
- Audio Bitrate – Audio compression data rate
- Audio Format – Select between stereo and mono
- Video Parameters
 - Bitrate – Video compression data rate
 - VBR – Variable compression rate (recommended)
 - Resolution – Full (720x480) or Half (360x240) Resolution
 - Aspect Ratio – 4:3 Full Screen or 16:9 Wide Screen
 - GOP Structure – IBBP recommended
 - N-Factor – 12 is recommended
- Refresh – Refreshes parameter settings
- Program – Programs settings on the DVR

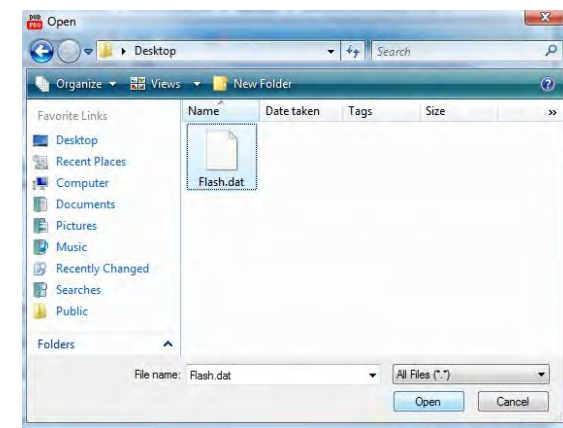
Firmware Updates

Periodically Datatoys will offer firmware updates. The latest firmware can be found at www.datatoys.com/support.php. To begin, download the appropriate firmware version to the desktop. Firmware files will appear as a flash.dat file.

In order to successfully perform a firmware update, media that has been configured by the DVR is required. Connect this media to the PC and open the DVR2PC program. Select "System Partition". Two files will be listed; "FORMATFLAG" and "PARTSIZE". If these files are not present, the media is not properly configured and the media must be used in the DVR to allow for automatic configuration. Once that has been done, the two files should be present. If these two files are shown, it is now safe to click PC>>DVR.



A browse window will appear. Navigate to the desktop, select the Flash.dat firmware file, and then click "Open".



The file will begin uploading which can take between 10-60 seconds. Once successful, the "Upload Finished" window will appear. Click "OK".



Close DVR2PC. If the DVR is connected to the PC, power down the unit. It is now safe to remove media.

CAUTION Before booting the DVR you must insure the power supply is capable of supplying adequate power to the DVR for at least ten minutes. Any interruption of the firmware update process could damage the DVR and render events useless.

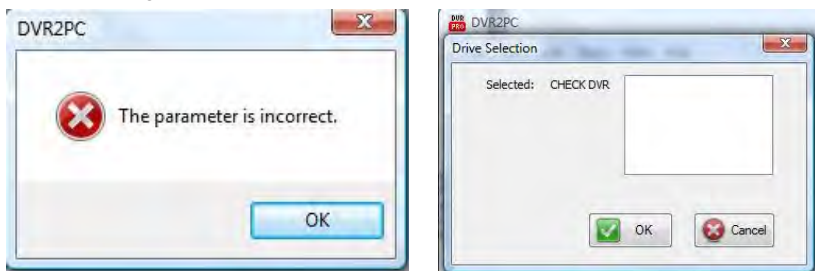
Insert the media loaded with the flash.dat file into a DVR. Before applying power to the DVR insure that the power supply is capable of supplying adequate power for up to ten minutes. Boot the DVR.

Once booted, the DVR will begin the firmware update process. This process may take up to five minutes. The unit will display a green, red, and amber light while updating. This is normal. After firmware is loaded the DVR will erase the firmware file from the media and reboot itself. Once rebooted and the amber light is flashing for a period of 60 seconds, it will be safe to operate the DVR.

Trouble Shooting

Here are some common problems users may experience with the DVR2PC Program.

Error: Message "Parameter is incorrect." Or "CHECK DVR"



Problem: The media is not properly loaded or has not been formatted by the DVR.

Solution: If the media was used with the DVR and thus, automatically configured, close DVR2PC and reconnect media to the PC and try again. If the media was not used in the DVR, boot the DVR and allow the media to be automatically configured, reconnect media to the PC, and try again.

Error: No events appear under Video Events.



Problem: There are no recordings or the media is not properly loaded or has not been formatted by the DVR.

Solution: To verify there are no recordings go to Systems>Partition. Two files may be listed; "FORMATFLAG" and "PARTSIZE, if these files are present, the media is properly loaded and there are no recordings on the selected media. If there are not any files, the media is not properly configured or loaded, reload the media and try again.



Datatoys Digital Video Systems
500 W. Brown Deer Rd #216
Milwaukee, WI 53217
001 (414) 294-8017
sales@datatoys.com